



Global trade intelligence that moves your business.

# 2011 U.S. Port Report

*View U.S. import details for the top 20 ports.*



# About Zepol's 2011 U.S. Import Port Report:

## The Report

Zepol is the leading global trade intelligence provider and disperses innovative and advanced trade information to help companies grow their business. This report gives details on the top 20 U.S. port authorities based on TEU (Twenty-foot-Equivalent-Units) volume.

The report was designed specifically for port authorities, steamship lines, 3PLs, importers, and suppliers of the United States market. It provides insights into where the U.S. transportation market has been in 2011 and where it will head in the future.

Each of the top 20 ports has a detailed profile which lists the leading foreign ports, master carriers, and key importers. The profile also includes a TEU trend of 2011 and 2010 and insights on top valued products that are imported through each port.

## The Data

All of the data in the Port Report is derived from Zepol's trade data tools TradeIQ™ and TradeView™. These products are subscription-based services for the international trade arena. Subscribers have access to even more detailed information for each port, carrier, product, and importer on both the transactional and aggregate levels.

Data is reported as it is released by government sources. In many cases, multiple sources will not show data that correlates. Most of these cases are accounted for based on how products arrive in the United States and the manner in which the U.S. government records the shipment data.

TEUs (Twenty-foot Equivalent Units) are derived from U.S. Customs trade data. TEUs include all containerized shipments released via U.S. Customs' Automated Manifest System (AMS), excluding empty containers and shipments with freight remaining on board (FROB). Values of trade are the total imports for 2011 from U.S. Census trade statistics.

The international ports listed are the last foreign port the shipments left from before reaching the United States. Key importers are taken from the top companies that import the largest amount of TEUs through each specific port. Master carriers are the top ocean carriers for the products to the specific port. The number of Bills of Lading is equivalent to shipment count.

Zepol hopes that the information in this report will be informative and help your organization plan for the future by fully understanding your market.

## Report note

This report is based on data collected from U.S. Customs on a daily basis from the Automated Manifest System. Because of this collection method, some data will show imports into a particular port which were actually transshipments.

This is particularly prominent for the ports of Tacoma and Seattle as imports to and exports from Prince Rupert and Vancouver are often recorded as imports for the United States as part of the collection method. Therefore, the port of entry for some imports reported will in reality be a Canadian port.

This recording method leads to an overstatement of imports for the ports of Seattle and Tacoma. In addition, some of the consignees and carriers listed will be transporting containers through Canadian ports rather than Seattle and Tacoma.

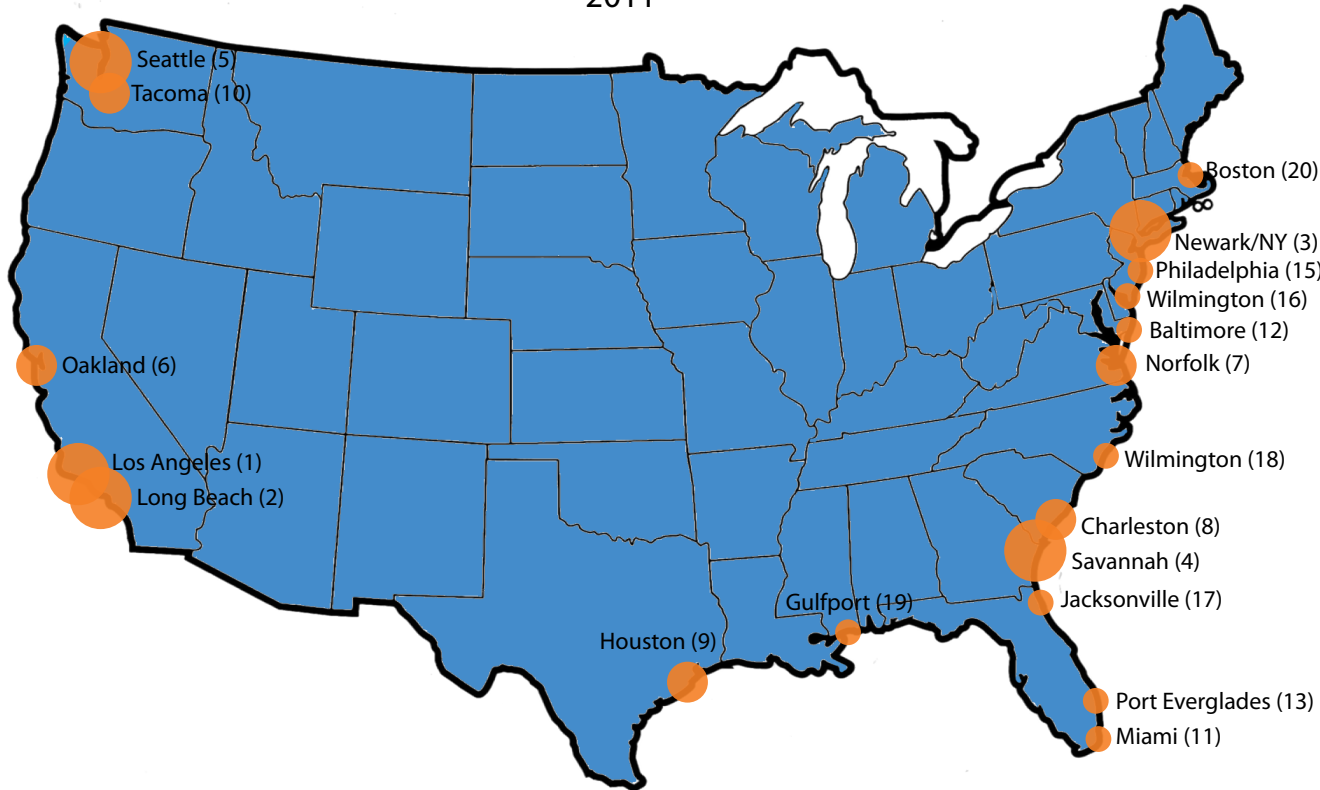
This data represents the information as it is recorded by U.S. Customs. The data recorded may overstate totals from transshipments and may include other data anomalies.

# Port Data Summary

Port	2011 TEU	2010 TEU	TEU Change	2011 Value	2010 Value	# of BoL
<a href="#">Los Angeles, CA</a>	4,142,032	4,068,600	1.80%	\$229,176,669,435	\$202,684,036,016	2,026,729
<a href="#">Long Beach, CA</a>	3,082,303	3,137,912	-1.77%	\$59,810,471,037	\$56,633,875,820	1,484,414
<a href="#">Newark, NJ/New York, NY</a>	2,741,253	2,672,369	2.58%	\$145,249,466,102	\$124,948,309,599	1,679,438
<a href="#">Savannah, GA</a>	1,097,731	1,086,088	1.07%	\$40,758,818,605	\$34,350,121,979	440,440
<a href="#">Seattle, WA</a>	810,320	948,071	-14.53%	\$30,406,833,264	\$32,748,564,372	385,615
<a href="#">Oakland, CA</a>	782,167	778,368	0.49%	\$27,485,609,130	\$24,368,645,072	345,782
<a href="#">Norfolk, VA</a>	744,290	738,397	0.80%	\$29,989,730,346	\$26,316,879,912	334,371
<a href="#">Charleston, SC</a>	602,488	566,716	6.31%	\$36,657,907,049	\$30,821,085,266	297,144
<a href="#">Houston, TX</a>	599,979	578,659	3.68%	\$80,293,152,944	\$60,132,809,283	279,473
<a href="#">Tacoma, WA</a>	487,050	482,750	0.89%	\$26,852,829,112	\$21,820,890,383	251,216
<a href="#">Miami, FL</a>	359,843	337,531	6.61%	\$13,020,433,535	\$10,959,828,214	211,075
<a href="#">Baltimore, MD</a>	303,865	281,402	7.98%	\$30,750,377,731	\$27,026,921,188	141,385
<a href="#">Port Everglades, FL</a>	295,900	283,171	4.50%	\$9,991,421,805	\$8,274,607,095	131,519
<a href="#">San Juan, PR</a>	156,895	156,722	0.11%	\$5,860,619,670	\$5,221,771,514	69,871
<a href="#">Philadelphia, PA</a>	154,205	147,947	4.23%	\$31,624,317,291	\$24,841,000,427	79,920
<a href="#">Wilmington, DE</a>	140,969	133,926	5.26%	\$5,364,369,677	\$1,984,540,233	17,784
<a href="#">Jacksonville, FL</a>	124,177	99,156	25.23%	\$10,055,118,699	\$9,127,673,371	43,837
<a href="#">Wilmington, NC</a>	122,105	120,183	1.60%	\$5,597,304,606	\$4,566,296,967	49,127
<a href="#">Gulfport, MS</a>	109,689	105,945	3.53%	\$1,620,230,938	\$1,591,549,341	16,733
<a href="#">Boston, MA</a>	99,790	84,856	17.60%	\$9,346,797,169	\$7,967,940,755	54,751

# Top U.S. Ports by TEUs

2011



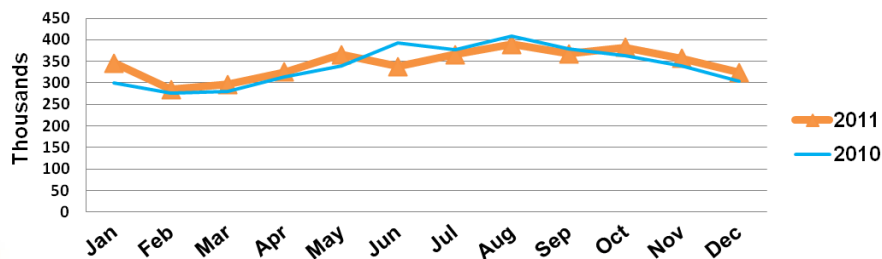


# Los Angeles, CA

**1.** The Port of Los Angeles takes the number one spot again in 2011, and surpasses all other U.S. ports by over 1 million TEUs (twenty-foot-equivalent). Los Angeles increased in total imports of TEUs by 1.8% from 2010, with over 4.1 million TEUs imported in 2011.

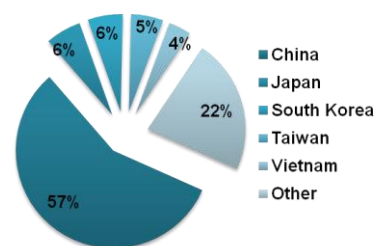
Of the thousands of goods imported by vessel to Los Angeles, the top products, in terms of vessel value, were motor vehicles, petroleum oils, scooters/trikes, and accessories for printers. Motor vehicles (HS 8703.24, 8703.23) had a value of over \$9.3 billion and a price per kilogram of over \$14. Scooters and trikes (HS 9503.00) had a vessel value of over \$4 billion dollars in 2011 and a price per kilogram of \$7.70.

**2010 and 2011 TEU Trend**



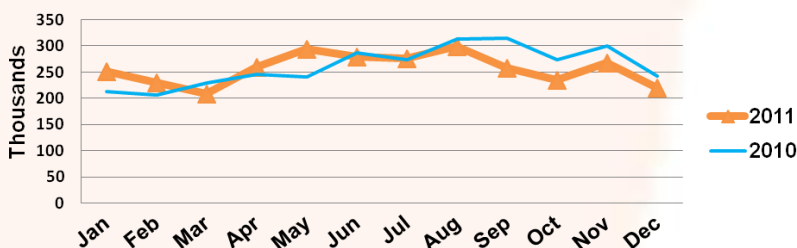
Five Key Importers	Top Master Carrier Partners
Lg Electronics	APLU - Apl Co Pte Ltd nol Group
Samsung Electronics	MAEU - Maersk Line
Bridgestone Firestone	EGLV - Evergreen Line
Macy's	HDMU - Hyundai Merchant Marine
Falken Tire	EGLV - Evergreen Line

**TEU's Top Countries of Origin**

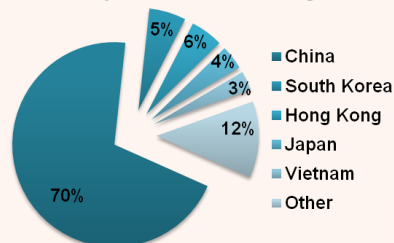


# Long Beach, CA

**2010 and 2011 TEU Trend**



**TEU's Top Countries of Origin**



Five Key Importers	Top Master Carrier Partners
Samsung Electronics	HJSC - Hanjin Shipping Company
Lg Electronics	MSCU - Msc mediterranean Shipping Company
GE Capital	COSU - China Ocean Shipping Company
Skechers Usa	CMDU - Cma Cgm
Coa	KKLU - Kawasaki Kisen Kaisha

**2.** The Port of Long Beach has once again placed second in overall TEU imports into the United States for 2011. This southern California port, located in close proximity to the Port of Los Angeles, handled over 3 million TEUs, but decreased in imports from 2010 by 1.8%.

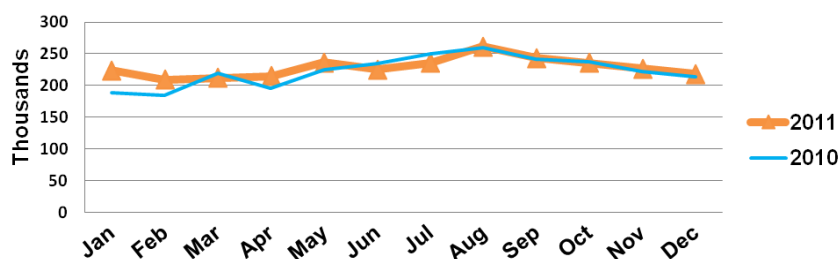
The top products imported to Long Beach, in terms of vessel value, include: petroleum oils, data processing machines, printers/faxes/copiers, trikes/scooters, and video games. Petroleum oils (HS 2709.00) were the most valuable product for Long Beach with over \$6 billion USD in vessel imports and a price per kilogram of \$0.72. The number two product was data processing machines (HS 8471.30), with a vessel value of \$2.3 billion and a hefty price per kilogram of \$112.

# New York/Newark

**3.** The Ports of New York, NY/Newark, NJ are under the same port authority and together were the third largest port in 2011. The ports brought in over 2.7 million TEUs and increased in imports from 2010 by 2.6%. New York and Newark processed over 1.6 million Bills of Lading in 2011, which was even more than Long Beach's 1.5 million Bills of Lading.

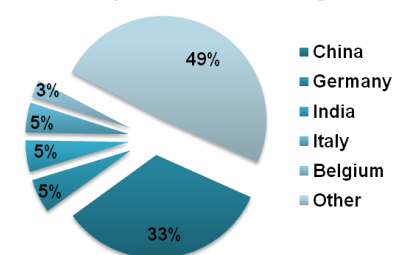
New York and Newark's top products were petroleum oils and passenger motor vehicles. Vessel values for petroleum oils (HS 271011, 2709.00, and 2710.19) were over \$25 billion and had a price per kilogram of \$0.86. Passenger motor vehicles (HS 8703.23 and 8703.24) had a vessel value of over \$9.4 billion and a price per kilogram of \$15.70.

**2010 and 2011 TEU Trend**



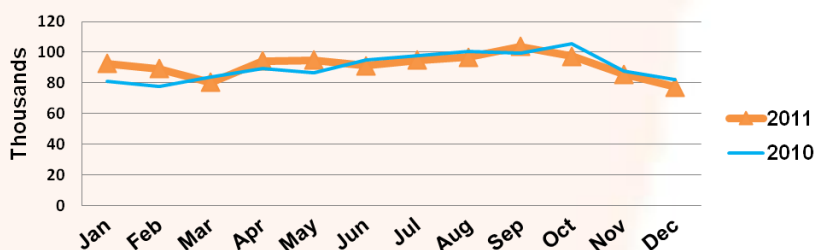
Five Key Importers	Top Master Carrier Partners
Ikea	MSCU - Msc Mediterranean Shipping Company
Conair	MAEU - Maersk Line
Nestle Waters	HLCU - Hapag Lloyd A G
Heineken	EGLV - Evergreen Line
Dole	CMDU - Cma Cgm

**TEU's Top Countries of Origin**

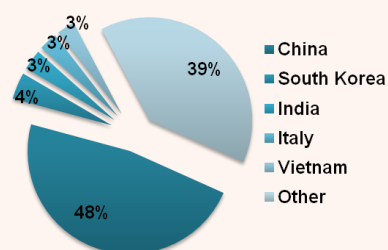


# Savannah, GA

**2010 and 2011 TEU Trend**



**TEU's Top Countries of Origin**



Five Key Importers	Top Master Carrier Partners
Ikea	MAEU - Maersk Line
Lg Sourcing	HLCU - Hapag Lloyd A G
Kia Motors	CMDU - Cma Cgm
Michelin	ZIMU - Zim Israel Navigation Co Ltd
Dole	NYKS - Nyk Line nippon Yusen Kaisha

**4.** The Port of Savannah ranked fourth in 2011 and had over 1 million TEUs come onto its docks. Savannah increased from 2010 in total TEUs by 1%, or a little over 10 thousand TEUs, and processed over 440 thousand Bills of Lading.

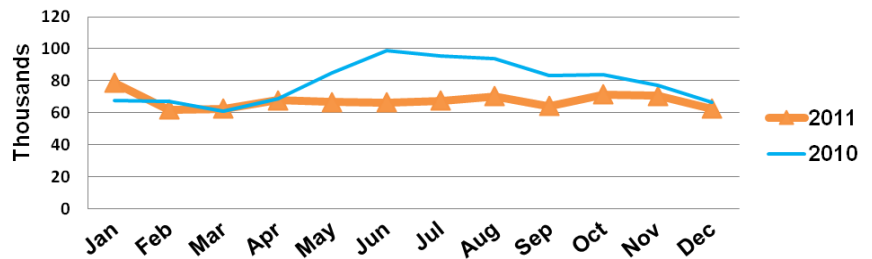
Savannah's leading products in 2011, in terms of vessel value, were medicaments, trikes/scooters, petroleum oils, and rubber. Medicaments (HS 3004.31) had a value of almost \$1 billion coming into Savannah and a costly price per kilogram of \$573. Rubber's (HS 4001.22) vessel value was \$712 million and its price per kilogram was \$4.44. The east coast ports of Savannah and Norfolk are the only two ports with rubber as a top product imported in 2011.

# Seattle, WA

**5.** The Port of Seattle had the fifth largest amount of TEU imports in 2011, despite its 14.5% drop from 2010. Seattle saw over 810 thousand TEUs enter its port and processed over 385 thousand Bills of Lading.

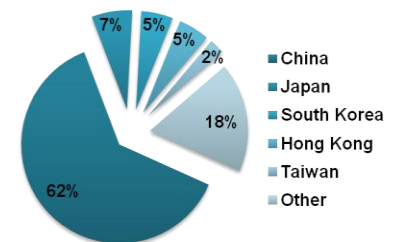
The highest valued products imported into the Port of Seattle in 2011 were parts of airplanes or helicopters, games and game machines, pullovers/sweaters, television receivers, and trikes/scooters. Parts of airplanes or helicopters (HS 8803.30) had a vessel value of \$773 million and a lofty price per kilogram of \$240. Games and game machines (HS 9504.90) also had a surprisingly high vessel value of \$730 million and a price per kilogram of \$50.

2010 and 2011 TEU Trend



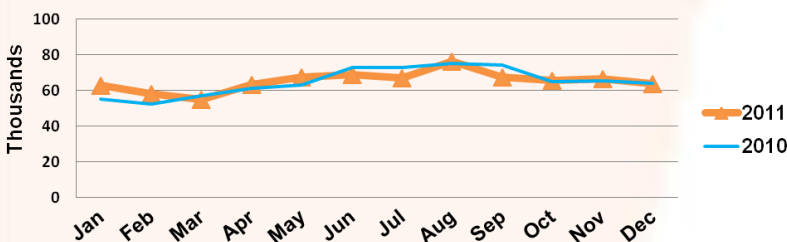
Five Key Importers	Top Master Carrier Partners
Ikea	APLU - Apl Co Pte Ltd Nol Group
Michaels Stores	MAEU - Maersk Line
Wal Mart	HLCU - Hapag Lloyd A G
Shopko Stores	CHNJ - China Shipping Container Lines Co Ltd
Tao Ceramics	CMDU - Cma Cgm

TEU's Top Countries of Origin

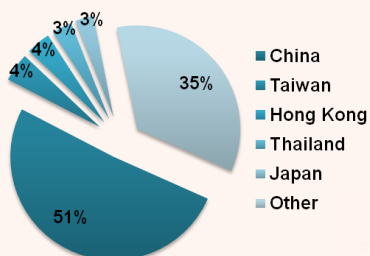


# Oakland, CA

2010 and 2011 TEU Trend



TEU's Top Countries of Origin



Five Key Importers	Top Master Carrier Partners
Canon	EGLV - Evergreen Line
E E Co	APLU - Apl Co Pte Ltd nol Group
Cost Plus Management	MSCU - Msc mediterranean Shipping Company
Euromarket Designs	YMLU - Yang Ming Marine Transport Corp
The Wine Group	MAEU - Maersk Line

**6.** The Port of Oakland, located near San Francisco, was the sixth largest port in 2011 and imported over 782 thousand TEUs. The port saw a slight increase from the previous year of 0.49% and processed 346 thousand Bills of Lading.

The top products, in terms of vessel value, imported through Oakland's port were accessories and parts for printers, coffee, photosensitive devices, parts for automatic data processing and wine of fresh grapes. Parts for printers (HS 8443.99) had a high vessel value of \$1.9 billion and a price per kilogram of \$41. Coffee (HS 0901.11) had a value, not far behind, at \$909 million and a price per kilogram of \$5.77.

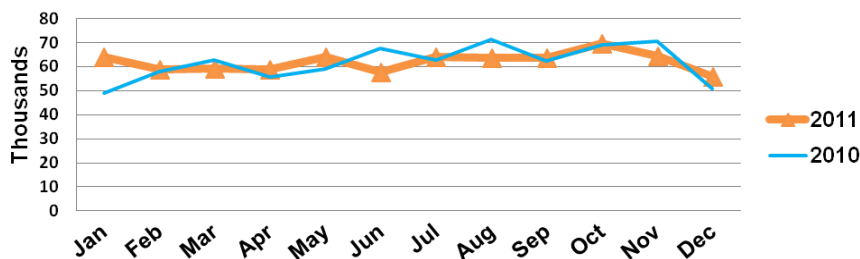


# Norfolk, VA

**7.** The Port of Norfolk was ranked seventh in TEU imports to the United States in 2011 with a total of over 744 thousand TEUs imported. The port rose from 2010's numbers by a slight 0.8%, yet topped over 2009's low imports by 11.5%.

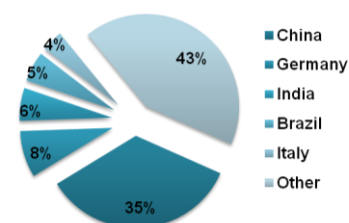
The leading products, in terms of vessel value, imported to the Port of Norfolk were trikes/scooters, parts for printers, rubber, medicaments and parts for motor vehicles. Trikes/scooters (HS 9503.00) had a value of \$746 million and a price per kilogram of \$10.38. Rubber (HS 4001.22) had a vessel value of over \$650 million into Norfolk and had a price per kilogram of \$4.44, equivalent to the Port of Savannah's price per kilogram of rubber.

**2010 and 2011 TEU Trend**



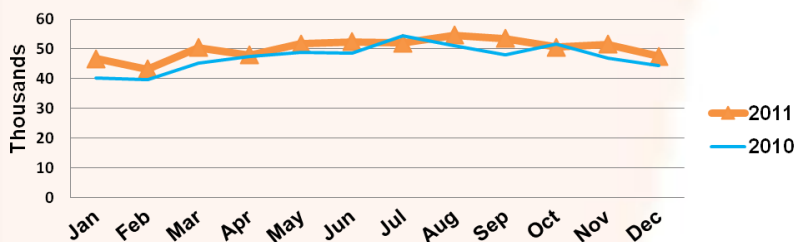
Five Key Importers	Top Master Carrier Partners
Michelin	MSCU - Msc Mediterranean Shipping Company S A
Maxion Fumagalli	MAEU - Maersk Line
Cost Plus	HLCU - Hapag Lloyd A G
Stihl	NYKS - Nyk Line Nippon Yusen Kaisha
Restoration Hardware	HJSC - Hanjin Shipping Company Ltd

**TEU's Top Countries of Origin**

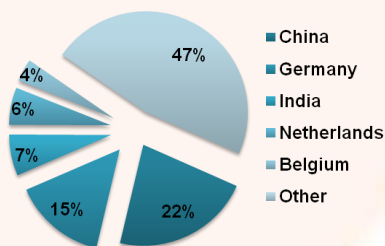


# Charleston, SC

**2010 and 2011 TEU Trend**



**TEU's Top Countries of Origin**



Five Key Importers	Top Master Carrier Partners
Daimler Chrysler	MAEU - Maersk Line
BMW	MSCU - Msc mediterranean Shipping Company
Michelin	EGLV - Evergreen Line
Mercedes Benz	HLCU - Hapag Lloyd A G
Pirelli Tire	APLU - Apl Co Pte Ltd nol Group

**8.** The Port of Charleston is in the eighth spot for 2011 with 602 thousand TEUs imported, significantly less than the Port of Norfolk. Charleston rose from 2010 by 6.3%, almost 40 thousand TEUs, and processed 297 thousand Bills of Lading.

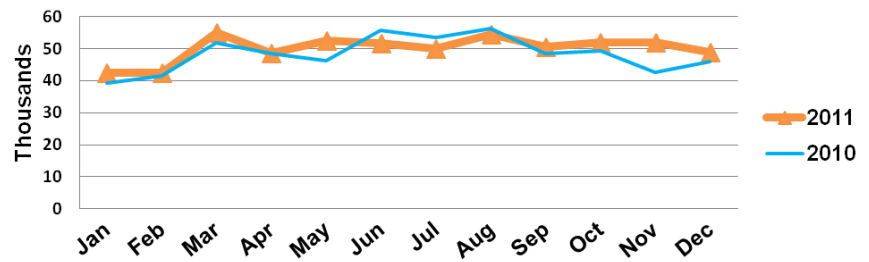
The Port of Charleston's top imported products, in terms of vessel value, include: spark-ignition engines, medicaments, odoriferous substances and mixtures, and compression-ignition engines. Spark-ignition engines (HS 8407.34) had a value of \$1.5 billion and a price per kilogram of \$15.47, while compression-ignition engines (HS 8408.20) had a vessel value of \$606 million and a price per kilogram of \$18.66.

# Houston, TX

**9.** The Port of Houston was the ninth largest port in 2011 with 599 thousand TEUs imported. Houston had a 3.7% increase in TEUs from 2010 and a 19.5% increase from 2009. Also worth mentioning is the Port of Houston posted its highest numbers back in 2006 with 654 thousand TEUs.

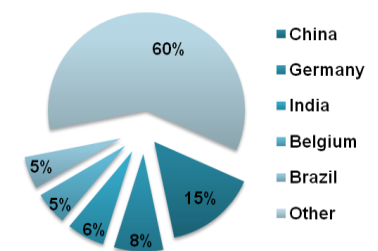
In terms of vessel value, the top products imported into the Port of Houston were petroleum oils, and casing and tubing for oil or gas drilling...not much of a surprise for the oil-rich region. Petroleum oils (HS 2709.00, 2710.19, and 2710.11) had a total vessel value of over \$46 billion and an average price per kilogram of \$0.74. Casing and tubing (HS 7304.29 and 7306.29) had a total vessel value of \$2.96 billion and a price per kilogram of \$1.46.

2010 and 2011 TEU Trend



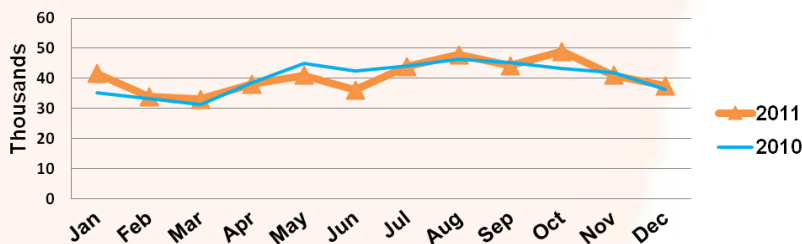
Five Key Importers	Top Master Carrier Partners
Sintex Minerals Services	MAEU - Maersk Line
Heineken	CMDU - Cma Cgm
Nordana	MSCU - Msc Mediterranean Shipping Company
Arauco Wood Products	HLCU - Hapag Lloyd A G
Tri Star	SMLU - Seaboard Marine Ltd

TEU's Top Countries of Origin

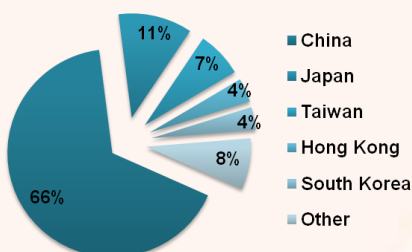


# Tacoma, WA

2010 and 2011 TEU Trend



TEU's Top Countries of Origin



Five Key Importers	Top Master Carrier Partners
Michaels Stores	KKLU - Kawasaki Kisen Kaisha Ltd
Subaru	EGLV - Evergreen Line
Stride Rite	HDMU - Hyundai Merchant Marine
Ace Hardware	YMLU - Yang Ming Marine Transport Corp
Vtech Electronics	MOLU - Mitsui O S K Lines Ltd

**10.** The Port of Tacoma is the tenth largest port for 2011, and second Washington port on the list. Tacoma had TEU imports topping 487 thousand; the Port has increased in TEU imports from 2010 by 0.89% and processed over 251 thousand Bills of Lading.

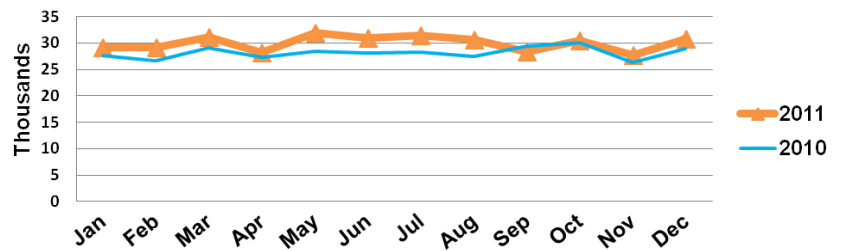
The leading products, in terms of vessel value, that were imported through the Port of Tacoma, were passenger motor vehicles, parts and accessories for motor vehicles, gear boxes for motor vehicles, games and game machines, and television receptors. Passenger motor vehicles (HS 8703.23) had a total vessel value of \$1.8 billion and a price per kilogram of \$10.38. Television receptors (HS 8528.71) also had a high value of \$661 million and an average price per kilogram of \$46.29.

# Miami, FL

**11.** The Port of Miami is once again ranked the 11th largest port for 2011 with TEU imports reaching 359 thousand. Miami increased in imports by 6.6% from 2010 and 17% from the dip in 2009. The Port of Miami is one of three Florida ports on the top-twenty list and processed over 211 thousand Bills of Lading.

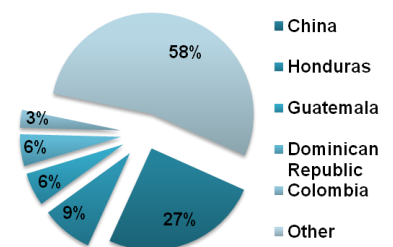
The top imported products to the Port of Miami, in terms of vessel value, were T-shirts, sweaters/pullovers, perfume, cigars/cigarillos, and petroleum oils. T-shirts (HS 6109.10) had a vessel value in 2011 of over \$830 million and a price per kilogram of \$8.75. Cigars/Cigarillos (HS 2402.10) had a value of \$316 million and a price per kilogram of \$18.78.

**2010 and 2011 TEU Trend**



Five Key Importers	Top Master Carrier Partners
Heineken	SMLU - Seaboard Marine Ltd
Central American Produce	MAEU - Maersk Line
HanesBrands	CMDU - Cma Cgm
Mobis Parts	APLU - Apl Co Pte Ltd nol Group
City Furniture	CHHK - China Shipping Container Lines Hong Kong

**TEU's Top Countries of Origin**

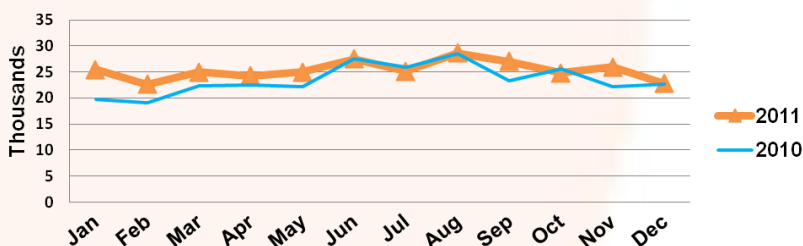


# Baltimore, MD

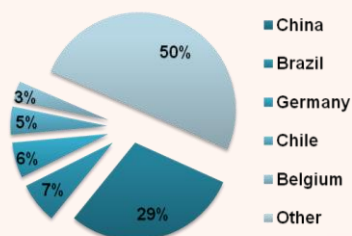
**12.** The Port of Baltimore moved from the 13th to the 12th largest U.S. port in 2011. Baltimore imported over 303 thousand TEUs and increased TEU import volume by almost 8% from 2010. The Port of Baltimore processed over 141 thousand shipments in 2011, almost 10 thousand more than 2010.

The port of Baltimore's leading products, in terms of vessel value, are passenger motor vehicles, uranium, nickel, and mechanical shovels/excavators. Uranium (HS 2844.20) imports valued over \$2 billion and had a steep price per kilogram of \$708.22. Nickel (HS 7502.10) imports had a total value of over \$1.3 billion and a price per kilogram of \$23.57. Baltimore is the only port to have nickel and uranium imports as its top-valued products.

**2010 and 2011 TEU Trend**



**TEU's Top Countries of Origin**



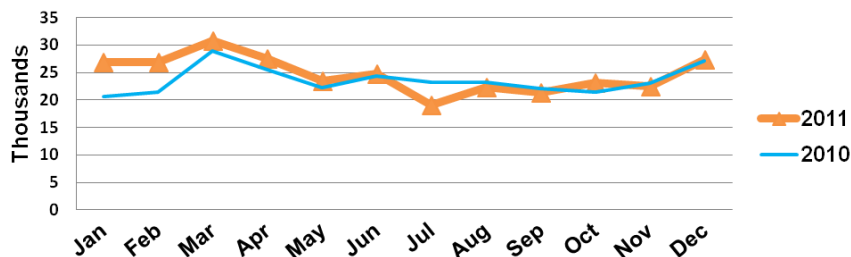
Five Key Importers	Top Master Carrier Partners
Ikea	MSCU - Msc Mediterranean Shipping Company
Arauco Wood Products	EGLV - Evergreen Line
Empire Resources	ACLU - Atlantic Container Line Ab
Cmpc Usa	CHIW - Compania Sud Americana De Vapores
Michelin	HLCU - Hapag Lloyd A G

# Port Everglades, FL

**13.** Port Everglades is ranked 13th for 2011, dropping from its number 12 spot in 2010. Port Everglades had a total count of over 295 thousand TEUs enter its port and increased from 2010 by 4.5%. Port Everglades also handled over 131 thousand Bills of Lading in 2011.

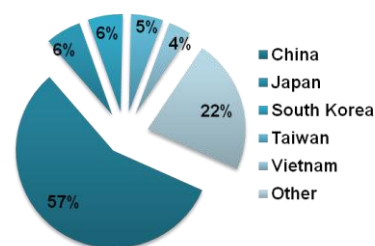
The top imported products in 2011, by vessel value, to the Port Everglades were petroleum oils, medical instruments, sweaters/pullovers, and T-shirts. Medical instruments (HS 9018.90) had a value of over \$569 million and a price per kilogram of \$17.11. T-Shirts (HS 6109.10) were valued at over \$393 million and had a similar, but slightly less, price per kilogram of \$8.57.

2010 and 2011 TEU Trend



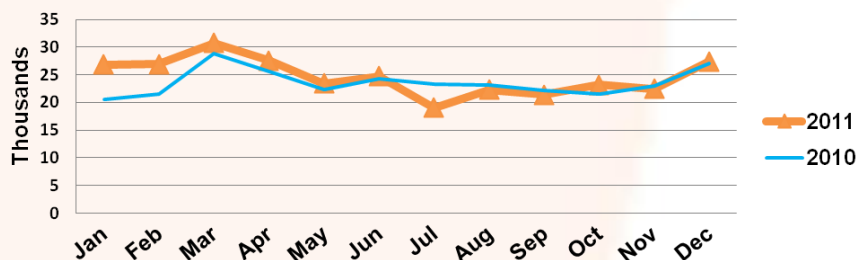
Five Key Importers	Top Master Carrier Partners
Chiquita	CLAM - Crowley Latin America Services Llc
Sol Group Marketing Freshex	MSCU - Msc Mediterranean Shipping Company
Dole	GWFL - Great White Fleet Ltd
Ayco Farms	AIEI - Agriculture Investment Export Inc
Nestle Waters	SEFN - Seafreight Line Ltd

TEU's Top Countries of Origin

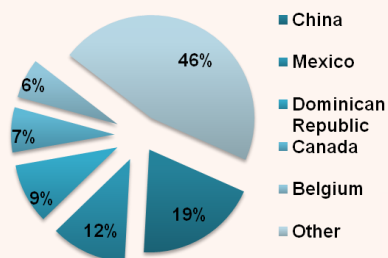


# San Juan, PR

2010 and 2011 TEU Trend



TEU's Top Countries of Origin



Five Key Importers	Top Master Carrier Partners
Messrs Mendez	HLCU - Hapag Lloyd A G
Cervceria	MAEU - Maersk Line
Colgate Palmolive	DOLQ - Dole Ocean Cargo Express
Dole	EGLV - Evergreen Line
Able Sales	APLU - Apl Co Pte Ltd nol Group

**14.** The Port of San Juan, though sometimes missed, has not gone unnoticed as the 14th largest port in 2011. San Juan imported over 156 thousand TEUs, with a tiny increase from 2010 of 0.11%. San Juan also processed 69 thousand Bills of Lading in 2011, a tad less than 2010.

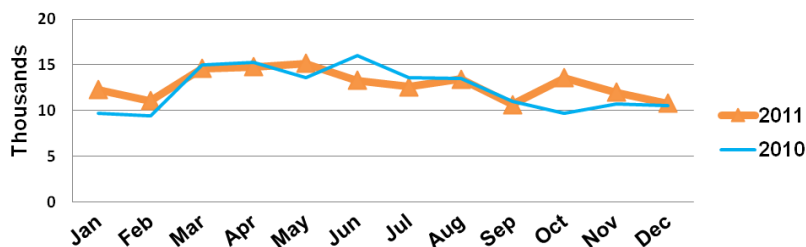
The highest vessel-valued products imported into San Juan in 2011 were petroleum oils, passenger motor vehicles, odoriferous mixtures, and medical instruments. Passenger motor vehicles (HS 8703.23) had a value of \$424 million and a price per kilogram of \$8.51. Medical instruments (HS 9018.90) had a total value of \$128 million and an average price per kilogram of \$32.30, much higher than Port Everglades' medical instrument imports.

# Philadelphia, PA

**15.** The Port of Philadelphia takes the number 15 spot for 2011 with a total of 154 thousand TEUs imported. Philadelphia increased TEUs from 2010 by 4.2%, which is over 6 thousand TEUs. The Port also handled over 79 thousand Bills of Lading.

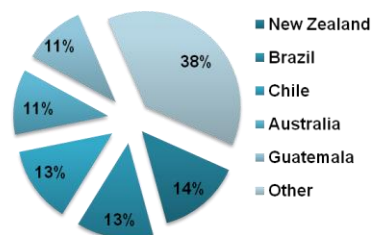
The top products imported, in terms of vessel value, to Philadelphia in 2011 were petroleum oils, passenger motor vehicles, cocoa beans, and bovine meat. Cocoa beans (HS 1801.00) had a total vessel value of \$711 million and a price per kilogram of \$2.91. Bovine meat (HS 0202.30) had a total value of \$610 million for the year and a price per kilogram of \$4.09.

2010 and 2011 TEU Trend



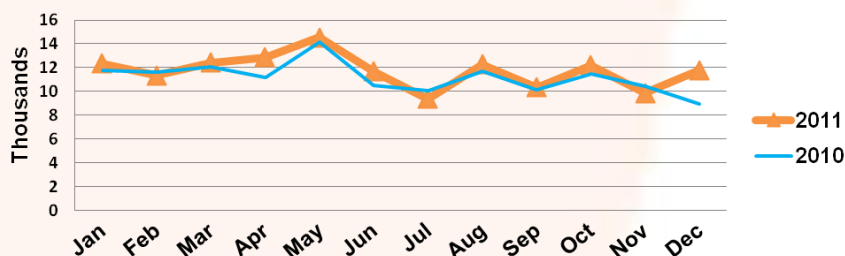
Five Key Importers	Top Master Carrier Partners
David Oppenheimer	TFXL - Transfrut Express Limited
Ikea	GWFL - Great White Fleet Ltd
Pirelli Tire	DLFF - Dole Fresh Fruit International Limited
Jbs Australia	GWFT - Great White Fleet Liner Services Ltd
Jac Vandenberg	DOLQ - Dole Ocean Cargo Express

TEU's Top Countries of Origin

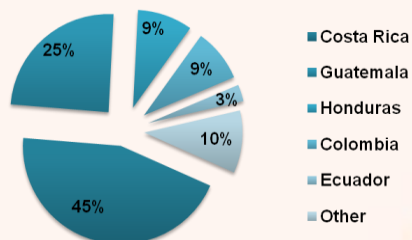


# Wilmington, DE

2010 and 2011 TEU Trend



TEU's Top Countries of Origin



Five Key Importers	Top Master Carrier Partners
Dole	HLCU - Hapag Lloyd A G
Chiquita	MAEU - Maersk Line
Hanover Foods	DOLQ - Dole Ocean Cargo Express
Bermuda	EGLV - Evergreen Line
Arc En Ciel Produce	APLU - Apl Co Pte Ltd nol Group

**16.** The Port of Wilmington's total TEU imports were 140 thousand in 2011, placing the port as the 16th largest in the United States. Wilmington increased TEU imports from 2010 by 5.3%. The Port of Wilmington processed the second lowest number of Bills of Lading, at a mere 17 thousand.

The highest valued products imported to the Port of Wilmington in 2011 were petroleum oils, bananas and plantains, and fresh grapes. Banana and plantains (HS 0803.00) had a total value of over \$378 million and an average price per kilogram of \$0.40. Fresh grapes (HS 0806.10) had a total value of \$178 million dollars and were a little pricier than bananas at \$1.58 per kilogram.

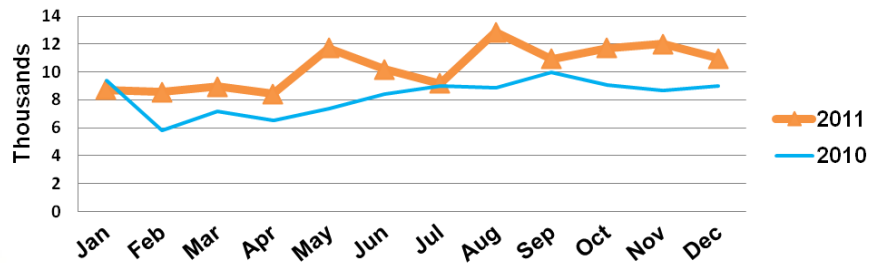


# Jacksonville, FL

**17.** The Port of Jacksonville is the third Floridian port on the list and it's the 17th largest in the United States. The port took in over 124 thousand TEUs in 2011 and increased a dramatic 25% in imports from 2010. The Port of Jacksonville had the largest year-over-year increase of any of the top 20 U.S. ports in 2011.

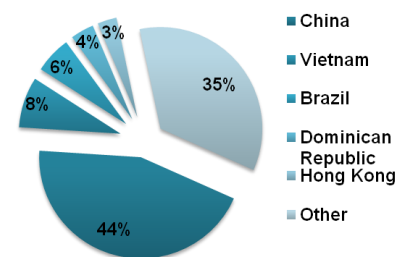
The top products imported through the Port of Jacksonville, in terms of vessel value, were petroleum oils, passenger motor vehicles and coffee. Dollar amounts for passenger motor vehicles (HS 8703.23 and 8703.24) totaled over \$4.3 billion and the average price per kilogram was \$11.64. Coffee (HS 0901.11) had a vessel value of over \$278 million and a price per kilogram of \$3.46.

**2010 and 2011 TEU Trend**



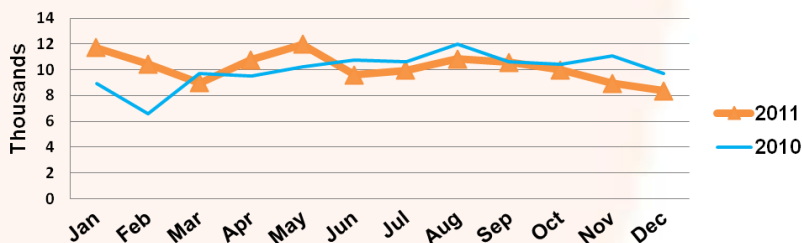
Five Key Importers	Top Master Carrier Partners
Rooms To Go	MOLU - Mitsui O S K Lines Ltd
Michaels Stores	CMDU - Cma Cgm
Upm Kymmene	MSCU - Msc Mediterranean Shipping Company
Beaver Street Fisheries	HDMU - Hyundai Merchant Marine
Arauco Wood Products	SFFV - Spliethoff Transport B V

**TEU's Top Countries of Origin**

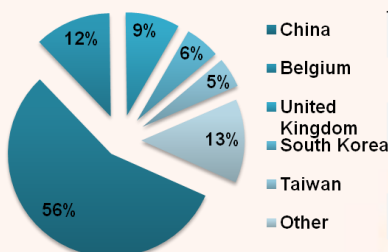


# Wilmington, NC

**2010 and 2011 TEU Trend**



**TEU's Top Countries of Origin**



Five Key Importers	Top Master Carrier Partners
Variety Wholesalers	YMLU - Yang Ming Marine Transport Corp
Legacy Classic Furniture	HJSC - Hanjin Shipping Company Ltd
Ellery Holdings	IILU - Independent Container Line Ltd
Parrish Tire	KKLU - Kawasaki Kisen Kaisha Ltd
Quickie Manufacturing	COSU - China Ocean Shipping Company

**18.** The Port of Wilmington was the 18th largest port for 2011 and came close to the 17th with TEU imports over 122 thousand. The Port of Wilmington increased imports from 2010 by 1.6% and from 2009 by 21%.

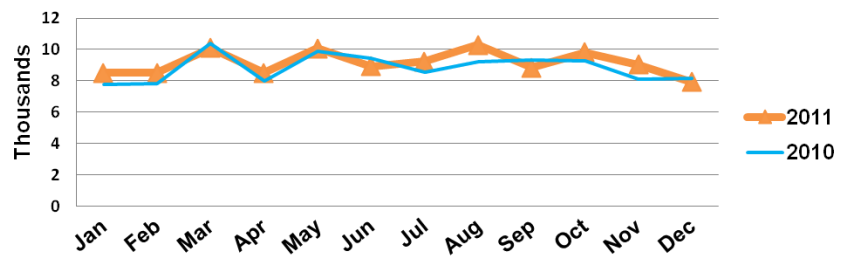
The highest valued products imported to Wilmington include: ethylene glycol, petroleum oils, para-xylene, mechanical shovels/excavators, and mixtures of urea and ammonium nitrate. Ethylene glycol (HS 2905.31) was the highest vessel valued product with over \$304 million imported in 2011 and a price per kilogram of \$0.99. Petroleum oils (HS 2710.11) had a total value of \$261 million and a price per kilogram of \$1.01.

# Gulfport, MS

**19.** The Port of Gulfport is the 19th largest port for 2011 and imported nearly 110 thousand TEUs. The port increased imports by 3.5% from last year, yet has the lowest Bills of Lading of any of the top 20 U.S. ports, about 16 thousand.

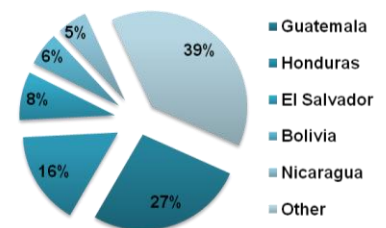
The top products, in terms of vessel value, for the Port of Gulfport were bananas and plantains, T-shirts, men's underwear, and sweaters/pullovers. Bananas and plantains (HS 0803.00) were the top product imported and had a vessel value of \$251 million; banana's price per kilogram was \$0.39. T-Shirts (HS 6109.10) were the second highest valued product at \$236 million imported and had a price per kilogram of \$6.92.

**2010 and 2011 TEU Trend**



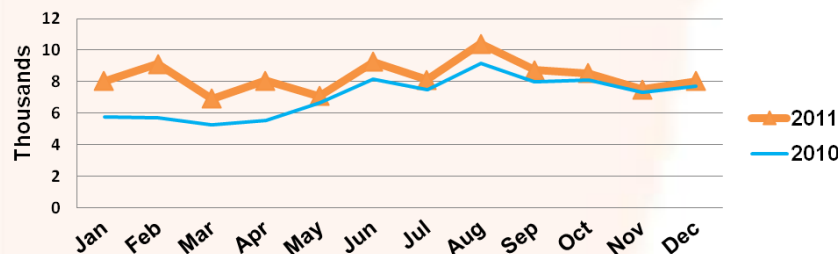
Five Key Importers	Top Master Carrier Partners
Dole	TFXL - Transfrut Express Limited
Chiquita	GWFL - Great White Fleet Ltd
Russell	CLAM - Crowley Latin America Services Llc
Garan Manufacturing	DLFF - Dole Fresh Fruit International Limited
Coosa River DC	DOLQ - Dole Ocean Cargo Express

**TEU's Top Countries of Origin**

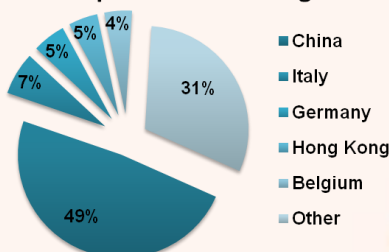


# Boston, MA

**2010 and 2011 TEU Trend**



**TEU's Top Countries of Origin**



Five Key Importers	Top Master Carrier Partners
Affordable Interior Systems	MSCU - Msc Mediterranean Shipping Company
Norton Autoparts	COSU - China Ocean Shipping Company
High Liner Foods	YMLU - Yang Ming Marine Transport Corp
Horizon Beverage	HJSC - Hanjin Shipping Company Ltd
Anheuser Busch	KKLU - Kawasaki Kisen Kaisha Ltd

**20.** The Port of Boston takes the final spot for 2011 with total TEU imports of over 99 thousand. The port increased from 2010 by 17.6%, a large spike with over 15 thousand more TEUs in 2011. The port also processed over 54 thousand Bills of Lading.

The leading products, measured by vessel value, for the Port of Boston in 2011 were petroleum oils, natural gas, frozen fish filets and passenger motor vehicles. Natural gas (HS 2711.11) had a hefty vessel value of more than \$572 million and an average price per kilogram of \$0.21. Frozen fish filets (HS 0304.29) also had a high value of nearly \$395 million and an average price per kilogram of \$4.52.

# About Zepol

At Zepol, we provide innovative, online trade databases that generate real competitive advantages for businesses. With our products, TradeIQ™, TradeView™, and ComplianceIQ™, subscribers have access to vital trade data sourced directly from the U.S. government, offering insights into the global supply chain.

Zepol's trade intelligence tools allow users to find new leads, source suppliers, and analyze international markets:

## TradeIQ™

See who is importing what products from where and whom they are importing from. Get access to up-to-date U.S. import shipments from over 200 countries, delivered via a user-friendly online database that makes finding the information you want easy.

## TradeView™

Access the most effective tool in the industry for analyzing U.S. imports and exports. Specify criteria by HTS code, U.S. port, country, transportation type, and more. Metrics include U.S. dollar values and weights, and can be easily downloaded for quick analysis.

## ComplianceIQ™

Search by HTS Code and, within minutes, view duty and tariff rates, U.S. Customs' rulings, antidumping and countervailing actions, quotas, and more. Zepol's ComplianceIQ™ can help to classify products, proactively monitor import-compliance changes, and determine appropriate U.S. tariffs, duties, and quotas.

Zepol Corporation is a Minnesota-based company working to provide the most complete and up-to-date trade data to organizations around the world. Zepol provides industry leading trade data tools for analyzing the United States trade marketplace.



### Global Headquarters

7455 France Avenue South, #409  
Edina, MN 55435-4702  
United States

Phone: 1.612.435.2191  
Fax: 612.435.2196



**Sales:** [info@zepol.com](mailto:info@zepol.com)

**Support:** [support@zepol.com](mailto:support@zepol.com)

**Media Members, please contact:**

Chelsea Craven  
[chelsea.craven@zepol.com](mailto:chelsea.craven@zepol.com)  
1.612.435.2179

[Type text]